

WHEEL KIT FOR THE COMPACT LOOM (optional)

NEW WHEEL KIT Front & Back

THE KIT INCLUDES:

4 Wood blocks with wheels

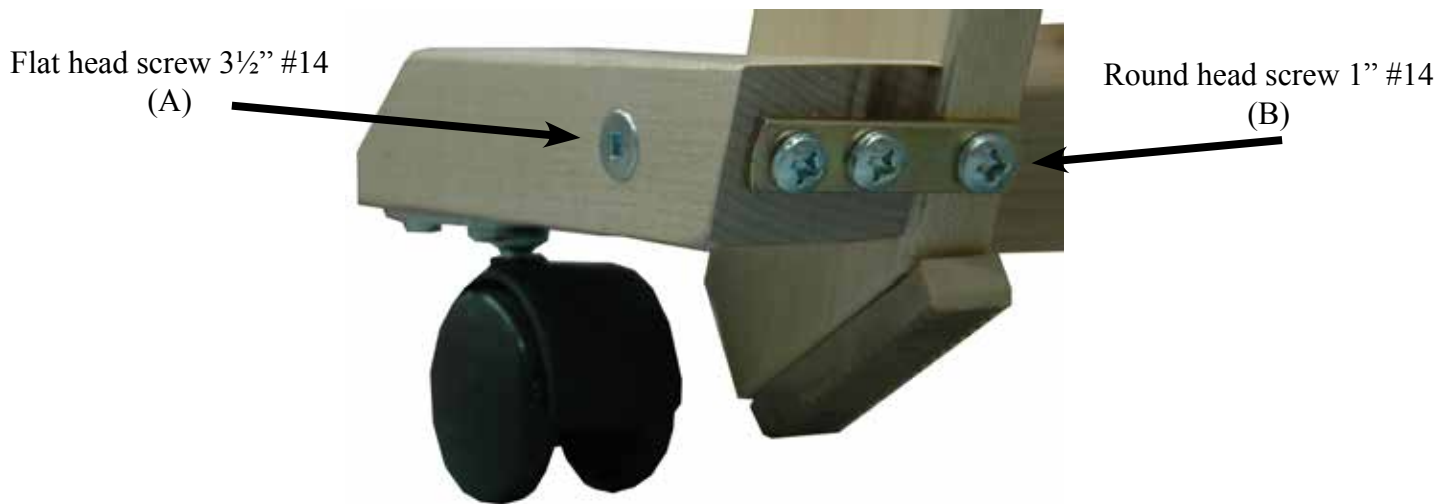
4 Flat head screw 3½" #14

4 Round head screw 1" #14

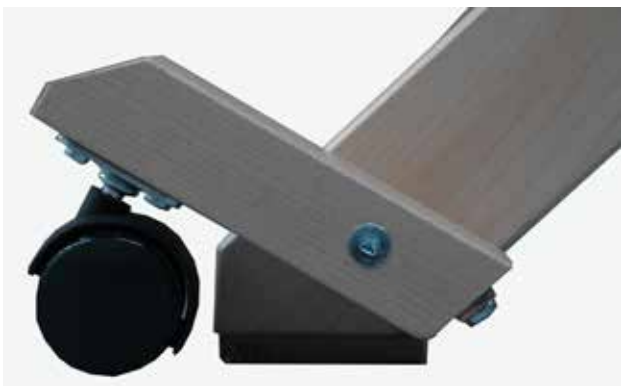


INSTRUCTIONS:

If you need to move the loom frequently, you can install the wheel kit. Therefore, remove the screws that support the legs and screw the wood blocks with wheel in place with the flat head screw 3½" (A). To lock the blocks in place screw the bracket to the legs with the round head screw 1" (B)



Loom Open



Loom Closed

