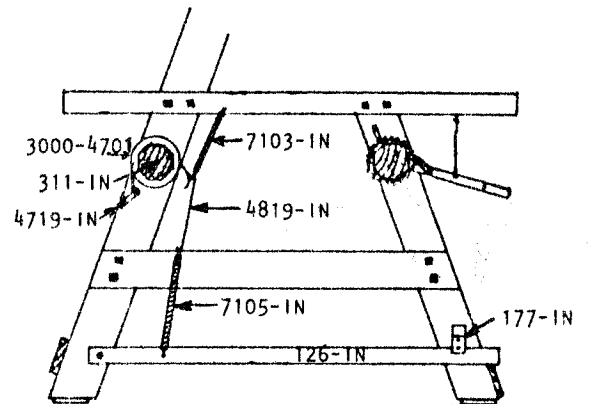
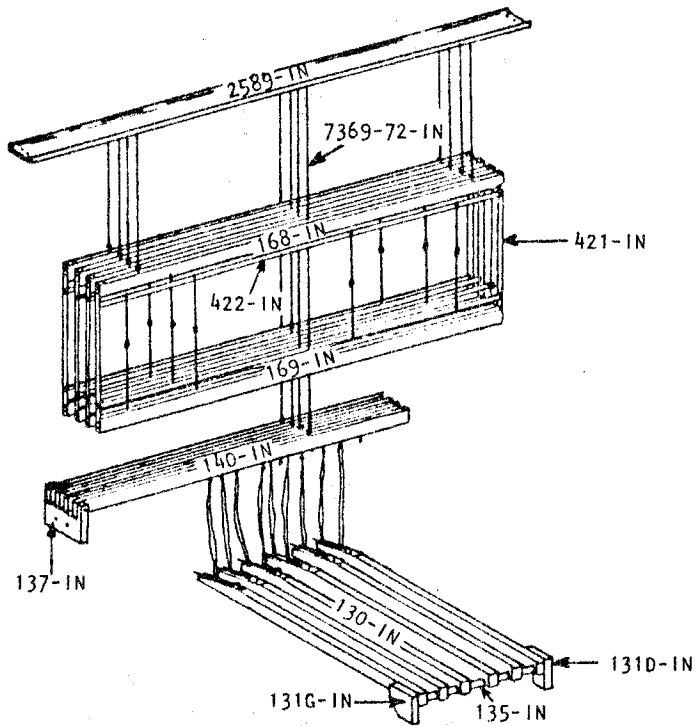
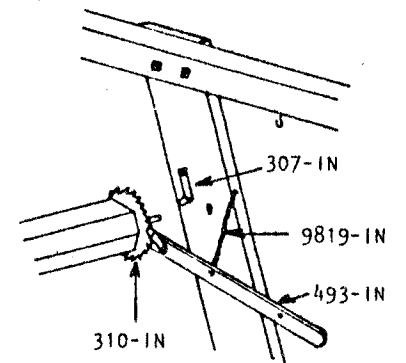
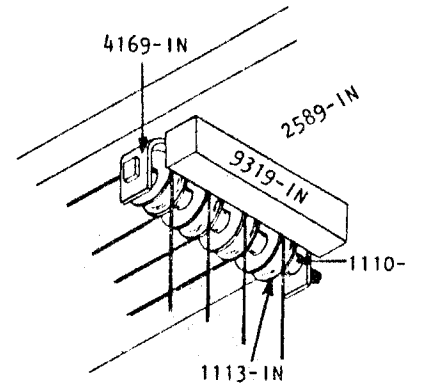
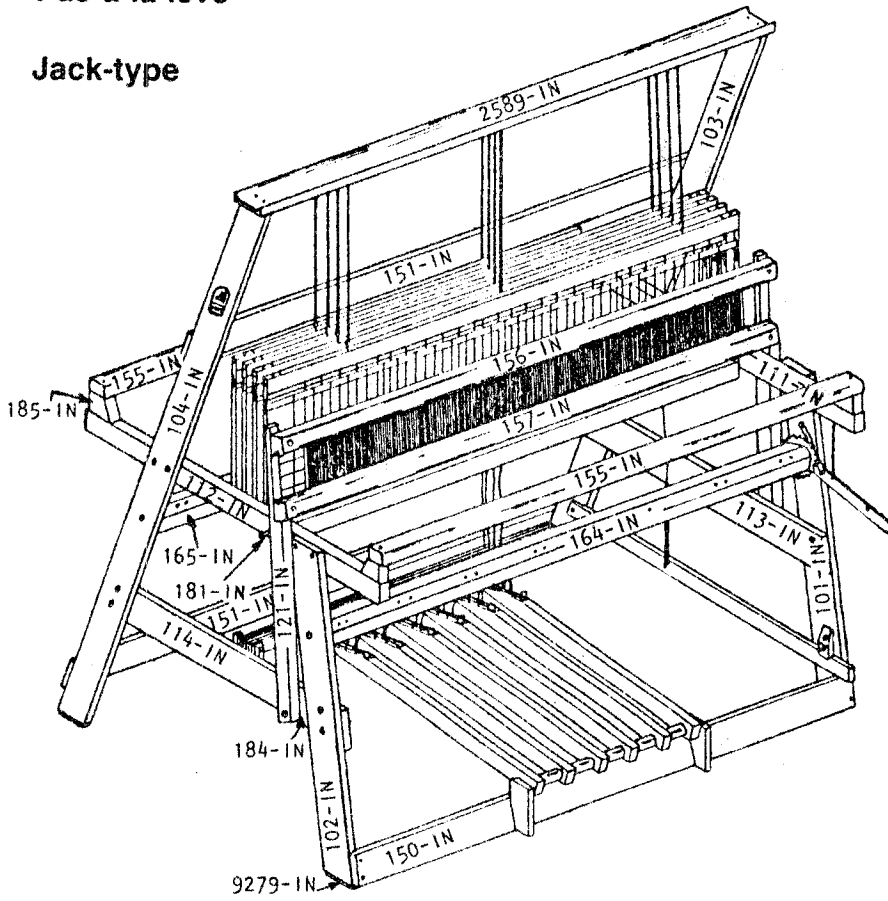


# INCA

Pas à la lève

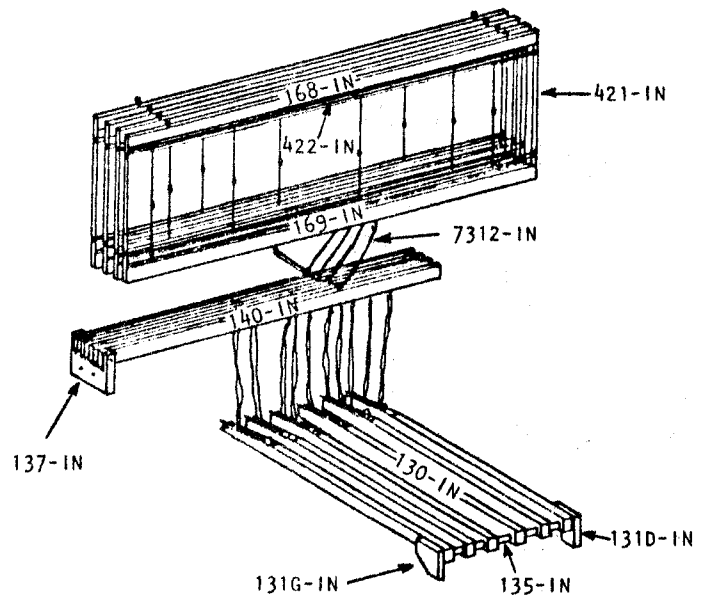
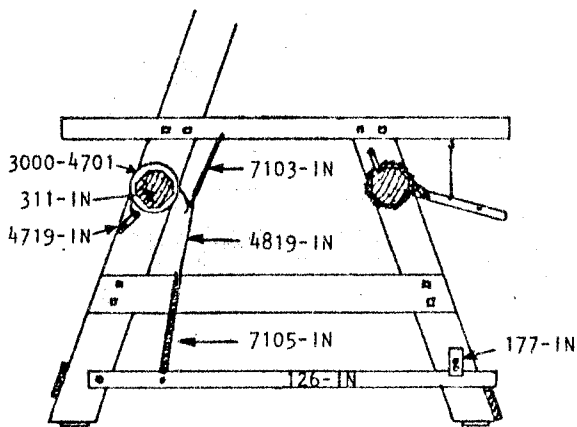
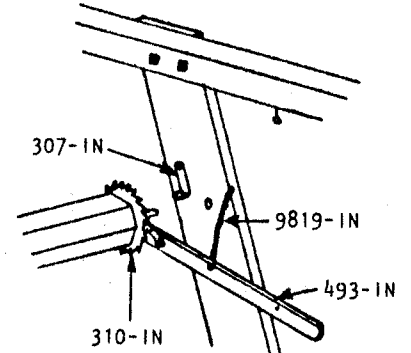
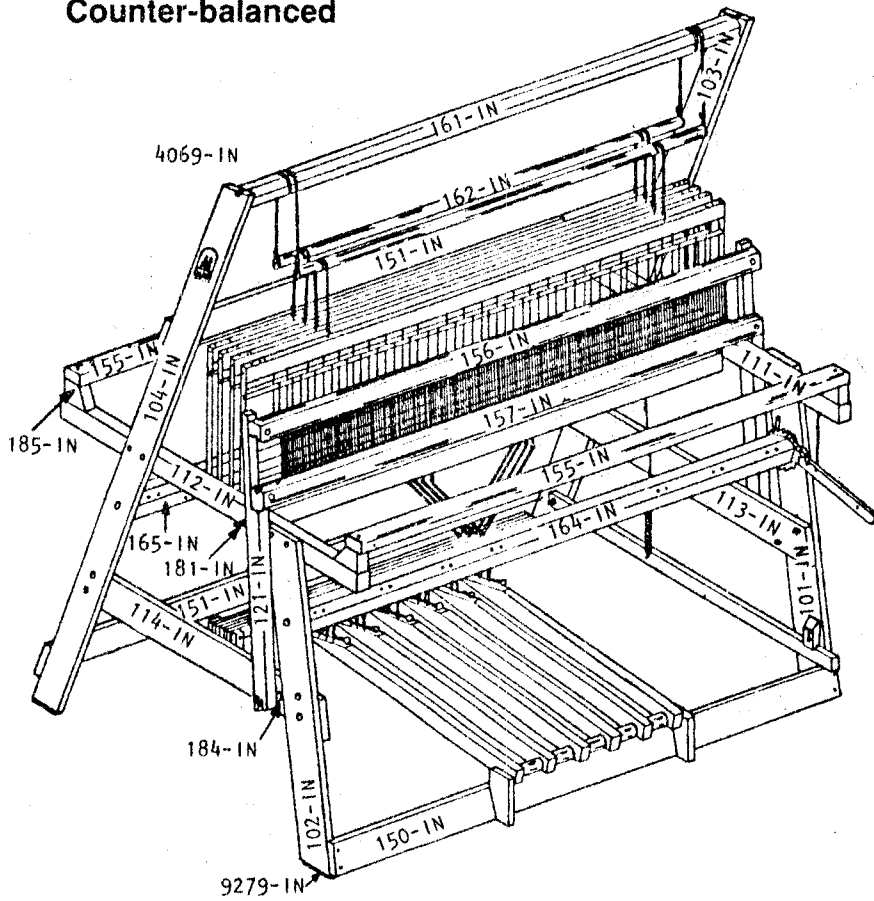
Jack-type



# INCA

Contre-balancé

Counter-balanced



# INCA 36"

-103-IN	Right upright post
104-IN	Left upright post
2589-IN	Castle top      Jack-type
101-IN	Right front post
102-IN	Left front post
111-IN	Right upper lateral cross-member
112-IN	Left upper lateral cross-member
181-IN	Stop peg for beater
113-IN	Right lower lateral cross-member
114-IN	Left lower lateral cross-member
151-IN	Back cross-member
150-IN	Treadle set, cross-member
185-IN	Breast or thread beam support
155-IN	Breast or thread beam
164-IN	Cloth beam with ratchet wheel (without apron)
165-IN	Warp beam with brake drum
121-IN	Batten sword
184-IN	Batten sword spacer
156-IN	Batten handtree
157-IN	Batten sley
161-IN	Upper roller (w/o rod)    Counter-Balance
162-IN	Lower roller (w/o pulley) Counter-balance
168-IN	Harness upper part
169-IN	Harness lower part
137-IN	Lam support
140-IN	Lam
131D-IN	Right treadle set support
1316-IN	Left treadle set support
130-IN	Treadle (with eyelets)
135-IN	Treadle spacer
126- IN	Brake treadle
177-IN	Stopper for brake treadle
191-IN	Beam stick (replacing the canvas apron)
<b>Metal</b>	
4249-IN	Spring clip for harness frame end
422-IN	Heddle support
423-IN	Hook for heddle support
427-IN	Hook for harness frame
4069-IN	Shaft for upper roller (Counter-balanced)
4169-1N	Pulley iron?fitting (Jack-type)
482-IN	Treadle set axle rod
493-IN	Take-up motion handle with ratchet pawl
307-IN	Front beam ratchet pawl
3000-5892	Crank
480-IN	Shaft for left side of the beam
4719-IN	Strenthening piece for brake
3000-4701	Flat steel brake circle
4819-IN	Brake wire extension
7103-IN	Brake spring (small)
7105-IN	Brake spring (large)
3000-4521	Treadle hooks (set of 6)

## INCA 36" (cont.)

### Cast-iron

310-IN Ratchet wheel  
311-IN Brake drum

### Plastic

3300-9239 Beater bumper  
9279-IN Polyvinyl under-post  
1113-IN Nylon pulley  
1110-IN Pulley spacer  
9319-IN Rubber to prevent the cords slipping out from the pulleys

### CORDS

7112-IN Upper roller cords (set/2) Counter-Balance  
7122- IN Lower roller cords (set/4) Counter-Balance  
1035-0000 Loop cords for roller (set/6) Counter-Balance  
7312-IN Cords connecting lams to harnesses (set/4) Counter-Balance  
7369-72-IN Loop cords (ass.) connecting lams to harn.(set/4) Jack  
9819-IN Loop cord for take-up motion handle

## INCA 8S

### WOOD

6349-IN Cross-member for pulley frame (long)  
6389-IN Lateral cross-member for pulley frame (,port)  
6409-INS trengthening piece for pulley frame  
6379-IN Lam divider cross-member  
6399-IN Lam divider post  
6429-TN Lam divider spacer  
6339-IN Floating lam  
6869-IN Treadle extension

### METAL

6649-IN Pulley axle rod  
6639-IN Rod gor lam divider  
6629-IN Treadle set axle rod